

Proudly brought to you by the 2019 Sydney Catalyst Postgraduate & Early Career Researcher Symposium working group

Co-chairs: Dr Marissa Williams and Amelia Smit
Ashleigh Parkin
Thomas Johnson
Carolyn Mazariego

Introduction:

Dr Marissa Williams, Co-chair PG&ECR working group

Welcome:

Professor Michael Boyer, Director Sydney Catalyst

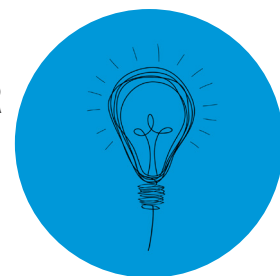
Keynote address:

[Professor Georgina Long](#), Co-Medical Director of
Melanoma Institute Australia (MIA)

Chair of Melanoma Medical Oncology and Translational Research at MIA and
Royal North Shore Hospital, The University of Sydney
2018 Cancer Researcher of the Year

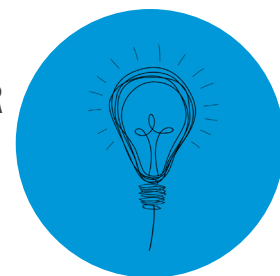
Panel Discussion: *Post PhD Pathways: Where to Next?*

facilitated by [AProf. Darren Saunders](#), featuring expert guests [AProf. Kellie Charles](#), [Dr Cleola Anderiesz](#), Marina Kacevska (TBC) & [Dr Steven Kao](#)



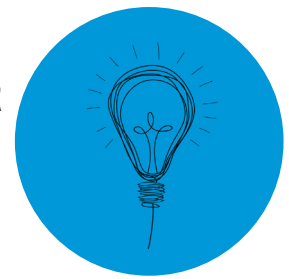
Abstract Presentations:

Abstract Title	Name	Institution	T1/2/3
Psychological impact of primary HPV testing: 12 months into the renewal of the Australian Cervical Screening Program	Rachael Dodd	The University of Sydney	T2-T3
Clinician-patient-family decision-making in adolescents and young adult cancer: a qualitative synthesis	Danielle Gessler	School of Psychology, The University of Sydney; Centre for Medical Psychology and Evidence Based Decision Making (CeMPED)	T2- T3
Establishing a SWATH-mass spectrometry biomarker discovery platform for comprehensive proteomics of plasma-derived extracellular vesicles for glioma tumour monitoring	Susannah Hallal	Discipline of Pathology, Sydney Medical School, The University of Sydney	T1-T2
Development and assessment of an integrated patient information, education and support program in head and neck cancer – Comprehensive Head and Neck Cancer Education and Support (CHANCES) program	Joe Jabbour	Chris O'Brien Lifehouse	T2-T3
Bone Morphogenetic Protein Signalling Pathway Acts at the Roots of Ovarian Cancer Chemo-Resistance	George Joun	Cancer Research Network, The University of Sydney	T1-T2
Overcoming Pgp-mediated drug-resistance by releasing lysosomal stored doxorubicin with lysosomal targeting agents	Lionel Leck	The University of Sydney	T1-T2
HIF-1 is activated in colorectal cancer in a cell culture model of obstructive sleep apnoea (OSA)	Chloe-Anne Martinez	The University of Sydney	T1-T2
Tissue engineered human prostate microtissues reveal key role of mast cell-derived tryptase in potentiating cancer-associated fibroblast (CAF)-induced morphometric transition in vitro	Brooke Pereira	The Garvan Institute	T1-T2
Geographic variation in time to diagnosis and treatment of oral cavity and oropharynx cancer in NSW	Rebecca Venchiarutti	Surgical Outcomes Research Centre (SOuRCe), Royal Prince Alfred Hospital	T2-T3



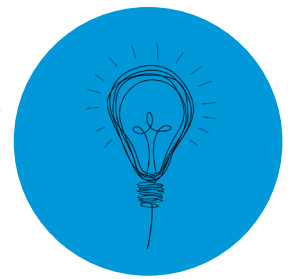
Rapid Fire Presentations:

Abstract Title	Name	Institution	T1/2/3
The influence of stoma on quality of life before and after pelvic exenteration	Lyndal Alchin	Royal Prince Alfred Hospital	T2-T3
Uncertainty experienced by adults undertaking cancer genome sequencing: Systematic review	Nicci Bartley	The University of Sydney	T2-T3
The association between body mass index and liver resection outcomes in hepatocellular carcinoma and colorectal cancer metastases	Rebecca Cui	Royal Prince Alfred Hospital	T2-T3
An interactive web app for evaluating somatic structural variant calling	Tingting Gong	The Garvan Institute	T1-T2
Subcellular specific targeting of JNK as a novel anti-metastatic therapy in triple negative breast cancer	Jeremy Han	The Garvan Institute	T1-T2
MicroRNA-based therapeutics for the treatment of high-risk neuroblastoma	Holly Holliday	The Garvan Institute	T1-T2
Difference of reading performance of Australian and Chinese radiologists in interpreting dense breast mammograms	Tong Li	The University of Sydney	T2-T3
Are melanoma patients willing to accept the risks of adjuvant immunotherapy treatment to receive the benefits?	Ann Livingstone	NHMRC Clinical Trials Centre, The University of Sydney	T2-T3
Older adults' preferred and perceived roles in decision-making about palliative chemotherapy, their decision priorities, and information preferences	Erin Moth	Concord Repatriation General Hospital	T2-T3
Mammographic Breast Density of Japanese women living in Australia: Implication for breast screening policy	Mia Mizukoshi	Faculty of Health Sciences, The University of Sydney	T2-T3



Rapid Fire Presentations (continued):

Abstract Title	Name	Institution	T1/2/3
Quality of Life in the initial 100 cases of Cytoreductive Surgery and Heated Intraperitoneal Chemotherapy at the Royal Prince Alfred Hospital	Heidi Mueller	Royal Prince Alfred Hospital	T2-T3
Personalised medicine approach in pancreatic cancer reveals fine-tuned stromal FAK manipulation improves global response the gemcitabine and Abraxane while sensitising circulating tumour cells to shear stress in transit	Kendelle Murphy	The Garvan Institute	T1-T2
Retrotransposon activity in young patients with Oral Squamous Cell Carcinoma (OSCC)	Laveniya Satgunaseelan	Royal Prince Alfred Hospital	T1-T2
GPs and melanoma: how Australian GPs make sense of their role at their role at the front line of melanoma care	Andrea Smith	Australian Institute of Health innovation, Macquarie University	T2-T3
Factors associated with length of stay in patients undergoing upper gastrointestinal cancer surgery	Clare Toms	Royal Prince Alfred Hospital	T2-T3
Long term pain and fatigue following pelvic exenteration	Kenneth Vuong	Royal Prince Alfred Hospital	T2-T3
The development of a metal based complex with anti-metastatic activity in breast cancer cells in-vitro	Andria May Yaourtis	The University of Sydney	T1-T2
Physical activity for women with metastatic breast cancer: A randomised feasibility trial	Jasmine Yee	The University of Sydney	T2-T3



Virtual Posters:

<p>Cecilia Chambers, The Garvan Institute of Medical Research (T1-T2) Inhibition of the NPY signalling axis as a novel therapeutic option in Pancreatic Cancer</p>
<p>Bekesho Geleta Wendimu, The University of Sydney (T1-T2) A novel therapeutic approach to inhibit the oncogenic cross-talk between pancreatic cancer cells and the surrounding stroma</p>
<p>Danielle Gessler, The University of Sydney (T2-T3) Clinician-patient-family decision-making in adolescents and young adult cancer: a qualitative synthesis</p>
<p>Jeremy Han, The University of Sydney (T1-T2) Extracellular vesicles isolated from glioma tumour microenvironments provide miRNA markers for disease stage and tumour progression</p>
<p>Thomas Johnson, ANZAC Research Institute (T1-T2) YB-1: an important driver of mesothelioma drug resistance and a potential novel therapeutic target</p>
<p>Ashleigh Parkin, The Garvan Institute of Medical Research (T1-T2) Dual inhibition of JAK and Src: A novel and promising therapeutic combination for pancreatic cancer</p>
<p>Tahlia Scheinberg, Chris O'Brien Lifecare (T2-T3) Evaluation of a mainstream model of genetic testing for men with prostate cancer – study schema</p>
<p>Amelia Smit, The University of Sydney (T2-T3) Delivering personal genomic risk of melanoma information to the public: social implications</p>
<p>Marissa Williams, Asbestos Disease Research Institute (T1-T2) Multiple mechanisms contribute to downregulation of tumour suppressor miRNAs in malignant pleural mesothelioma</p>