

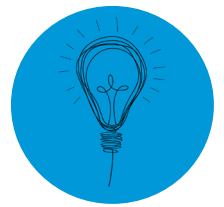
## PROGRAM

8.30 - 9.00am	Registration - Tea, coffee and light refreshments provided
9.00 - 9.10am	<b>Introduction - Dr Marissa Williams</b> Chair, Postgraduate & Early Career Researcher Symposium Working Group Asbestos Diseases Research Institute
9.10 - 9.20am	<b>Welcome - Professor Michael Boyer, Director of Sydney Catalyst</b>
9.20 - 9.50am	<b>Keynote Presentation - Professor Georgina Long</b> Co-Medical Director of Melanoma Institute Australia (MIA) Chair of Melanoma Medical Oncology and Translational Research at MIA Royal North Shore Hospital, The University of Sydney
9.50 - 10.00am	Question time

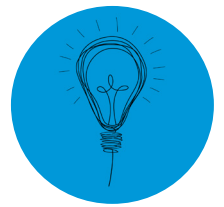
## SESSION 1

CHAired BY CAROLYN MAZARIEGO  
PoCoG, The University of Sydney

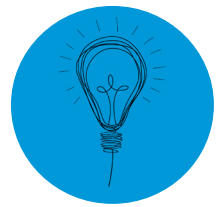
10.00 - 10.45am	<b>ABSTRACT PRESENTATIONS (10mins + Questions)</b>	
10.00 - 10.15am	<b>Brooke Pereira</b> <i>The Garvan Institute of Medical Research</i> Tissue engineered human prostate microtissues reveal key role of mast cell-derived tryptase in potentiating cancer-associated fibroblast (CAF)-induced morphometric transition in vitro	T1T2
10.15 - 10.30am	<b>Joe Jabbour</b> <i>Chris O'Brien Lifecare</i> Development and assessment of an integrated patient information, education and support program in head and neck cancer – Comprehensive Head and Neck Cancer Education and Support (CHANCES) program	T2T3
10.30 - 10.45am	<b>Chloe-Anne Martinez</b> <i>The University of Sydney</i> HIF-1 is activated in colorectal cancer in a cell culture model of obstructive sleep apnoea (OSA)	T1T2
10.45 - 11.10am	<b>RAPID FIRE PRESENTATIONS (3 mins)</b>	
Rapid Fire	<b>Erin Moth</b> <i>Concord General Repatriation General Hospital</i> Older adults' preferred and perceived roles in decision-making about palliative chemotherapy, their decision priorities, and information processes	T2T3
Rapid Fire	<b>Andria May Yaourtis</b> <i>The University of Sydney</i> The development of a metal based complex with anti-metastatic activity in breast cancer cells in vitro	T1T2
Rapid Fire	<b>Tong Li</b> <i>The University of Sydney</i> Difference of reading performance of Australian and Chinese radiologists in interpreting dense breast mammograms	T2T3



<b>Rapid Fire</b>	<b>Kendelle Murphy</b> <i>The Garvan Institute of Medical Research</i> Personalised medicine approach in pancreatic cancer reveals fine-tuned stromal FAK manipulation improves global response the gemcitabine and abraxane while sensitising circulating tumour cells to shear stress in transit	<b>T1T2</b>
<b>Rapid Fire</b>	<b>Ann Livingstone</b> <i>NHMRC Clinical Trials Centre, The University of Sydney</i> Are melanoma patients willing to accept the risks of adjuvant immunotherapy treatment to receive the benefits?	<b>T2T3</b>
<b>Rapid Fire</b>	<b>Rebecca Cui</b> <i>Royal Prince Alfred Hospital</i> The association between body mass index and liver resection outcomes in hepatocellular carcinoma and colorectal cancer metastases	<b>T2T3</b>
<b>11.10 - 11.40am</b>	<b>MORNING TEA</b>	
<b>SESSION 2</b>		<b>CHAired BY THOMAS JOHNSON</b> Asbestos Diseases Research Institute
<b>11.40 - 12.40pm</b>	<b>ABSTRACT PRESENTATIONS (10mins + Questions)</b>	
<b>11.40 - 11.55am</b>	<b>Danielle Gessler</b> <i>School of Psychology, The University of Sydney</i> Clinician-patient-family decision-making in adolescents and young adult cancer: A qualitative synthesis	<b>T2T3</b>
<b>11.55 - 12.10pm</b>	<b>George Joun</b> <i>The University of Sydney</i> Bone Morphogenetic Protein Signalling Pathway Acts at the Roots of Ovarian Cancer Chemo-Resistance	<b>T1T2</b>
<b>12.10 - 12.25pm</b>	<b>Rebecca Venchiarutti</b> <i>Surgical Outcomes Research Centre (SOuRCe), Royal Prince Alfred Hospital</i> Geographic variation in time to diagnosis and treatment of oral cavity and oropharynx cancer in NSW	<b>T2T3</b>
<b>12.25 - 12.40pm</b>	<b>Susannah Hallal</b> <i>Discipline of Pathology, Sydney Medical School, The University of Sydney</i> Establishing a SWATH-mass spectrometry biomarker discovery platform for comprehensive proteomics of plasma-derived extracellular vesicles for glioma tumour monitoring	<b>T1T2</b>
<b>12.40 - 1.00pm</b>	<b>RAPID FIRE PRESENTATIONS (3 mins)</b>	
<b>Rapid Fire</b>	<b>Tingting Gong</b> <i>The Garvan Institute of Medical Research</i> An interactive web app for evaluating somatic structural variant calling	<b>T1T2</b>
<b>Rapid Fire</b>	<b>Clare Toms</b> <i>Royal Prince Alfred Hospital</i> Factors associated with length of stay in patients undergoing upper gastrointestinal cancer surgery	<b>T2T3</b>



<b>Rapid Fire</b>	<b>Jasmine Yee</b> <i>The University of Sydney</i> Physical activity for women with metastatic breast cancer: a randomised feasibility trial	<b>T2T3</b>
<b>Rapid Fire</b>	<b>Laveniya Satgunaseelan</b> <i>Royal Prince Alfred Hospital</i> Retrotransposon activity in young patients with Oral Squamous Cell Carcinoma (OSCC)	<b>T1T2</b>
<b>Rapid Fire</b>	<b>Lyndal Alchin</b> <i>Royal Prince Alfred Hospital</i> The influence of stoma on quality of life before and after pelvic exenteration	<b>T2T3</b>
<b>Rapid Fire</b>	<b>Nicci Bartley</b> <i>The University of Sydney</i> Uncertainty experienced by adults undertaking cancer genome sequencing: Systematic review	<b>T2T3</b>
<b>1.00 - 2.00pm</b>	<b>NETWORKING LUNCH</b>	
<b>SESSION 3</b>		<b>CHAired BY ASHLEIGH PARKIN</b> The Garvan Institute of Medical Research
<b>2.00 - 2.45pm</b>	<b>ABSTRACT PRESENTATIONS (10mins + Questions)</b>	
<b>2.00 - 2.15pm</b>	<b>Lionel Leck</b> <i>The University of Sydney</i> Overcoming Pgp-mediated drug-resistance by releasing lysosomal stored doxorubicin with lysosomal targeting agents	<b>T1T2</b>
<b>2.15 - 2.30pm</b>	<b>Rachael Dodd</b> <i>The University of Sydney</i> Psychological impact of primary HPV testing: 12 months into the renewal of the Australian Cervical Screening Program	<b>T2T3</b>
<b>2.30 - 2.45pm</b>	<b>Jay Allen</b> <i>Consumer Presentation</i>	
<b>2.45 - 3.10pm</b>	<b>RAPID FIRE PRESENTATIONS (3 mins)</b>	
<b>Rapid Fire</b>	<b>Yolande O'Donnell</b> <i>The Garvan Institute of Medical Research</i> Subcellular specific targeting of JNK as a novel anti-metastatic therapy in triple negative breast cancer	<b>T1T2</b>
<b>Rapid Fire</b>	<b>Heidi Mueller</b> <i>Royal Prince Alfred Hospital</i> Quality of life in the initial 100 cases of cytoreductive surgery and heated intraperitoneal chemotherapy at the Royal Prince Alfred Hospital	<b>T2T3</b>
<b>Rapid Fire</b>	<b>Kenneth Vuong</b> <i>Royal Prince Alfred Hospital</i> Long term pain and fatigue following pelvic exenteration	<b>T2T3</b>



<b>Rapid Fire</b>	<b>Holly Holliday</b> <i>The Garvan Institute of Medical Research</i> MicroRNA-based therapeutics for the treatment of high-risk neuroblastoma	<b>T1T2</b>
<b>Rapid Fire</b>	<b>Mia Mizukoshi</b> <i>Faculty of Health Sciences, The University of Sydney</i> Mammographic Breast Density of Japanese women living in Australia: implication for breast screening policy	<b>T2T3</b>
<b>Rapid Fire</b>	<b>Andrea Smith</b> <i>Australian Institute of Health Innovation, Macquarie University</i> GPs and melanoma: how Australian GPs make sense of their role at the front line of melanoma care	<b>T2T3</b>
<b>3.10 - 3.30pm</b>	<b>AFTERNOON TEA</b>	

**PANEL DISCUSSION**

**FACILITATED BY DR DARREN SAUNDERS**  
University of New South Wales

<b>3.30 - 4.25pm</b>	<i>Post PhD Pathways: Where to Next?</i> <b>Panellists:</b> Dr Cleola Anderiesz Associate Professor Kellie Charles Dr Marina Kacevska Dr Steven Kao	
<b>4.25 - 4.35pm</b>	<b>AWARDS AND WRAP UP</b>	
<b>4.35 - 5.30pm</b>	<b>NETWORKING SESSION AND DRINKS</b>	

**VIRTUAL POSTERS**

Cecilia Chambers	Inhibition of NPY signalling axis as a novel therapeutic option in pancreatic cancer	T1T2
Bekesho Geleta	A novel therapeutic approach to inhibit the oncogenetic cross-talk between pancreatic cancer cells and the surrounding stroma	T1T2
Danielle Gessler	Clinician-patient-family decision-making in adolescents and young adult cancer: A qualitative analysis	T2T3
Jeremy Han	Subcellular specific targeting of JNK as a novel anti-metastatic therapy in triple negative breast cancer	T1T2
Thomas Johnson	YB-1: an important driver of mesothelioma drug resistance and a potential novel therapeutic target	T1T2
Hansol Lee	Advanced melanoma patients with high CD16+ macrophages have better response and survival to anti-PD-1 based immunotherapy	
Ashleigh Parkin	Dual inhibition of JAK and Src: A novel and promising therapeutic combination for pancreatic cancer	T1T2
Tahlia Scheinberg	Evaluation of a mainstream model of genetic testing for men with prostate cancer - study schema	All
Amelia Smit	Delivering personal genomic risk of melanoma information to the public: social implications	T2T3
Christina Stanislaus	Overview of robotic cancer surgery in a tertiary public hospital	T2T3
Marissa Williams	Multiple mechanisms contribute to downregulation of tumour suppressor mircoRNAs in malignant pleural mesothelioma	T1T2